



BERMUDAFIRST OVERVIEW



**BERMUDA
FIRST**

OUR HISTORY

- Formed originally as tri-partisan public/private partnership co-chaired by Premier, Leader of the Opposition and Private Sector CEO
- Supported by a Steering Committee of 22 and Advisory Committee of 60+ business and community leaders
- Registered non-profit
- Commissioned McKinsey Report (Nov 2009)
 - 32 recommendations to address the then-existing risks and opportunities
 - 4 sub-committees: economic diversification, international business, socio-economic foundations and hospitality & tourism
- Think-tank sessions (i.e. construction industry revival, improving airlift, etc.)
- Hamilton Waterfront Charrette
- Topic-specific working groups (i.e. Investor Summit, Legislative Reviews, Gaming, etc.)
- Ministerial collaboration (Economic Development, Finance, Home Affairs, National Security, Tourism & Transport)
- Ongoing stakeholder engagement
- “Putting Bermuda First” television series
- Active 2008-2014



**BERMUDA
FIRST**





**ROLL THE CLOCK
FORWARD TO
2017...**



**BERMUDA
FIRST**

BERMUDAFIRST IS REINVIGORATED

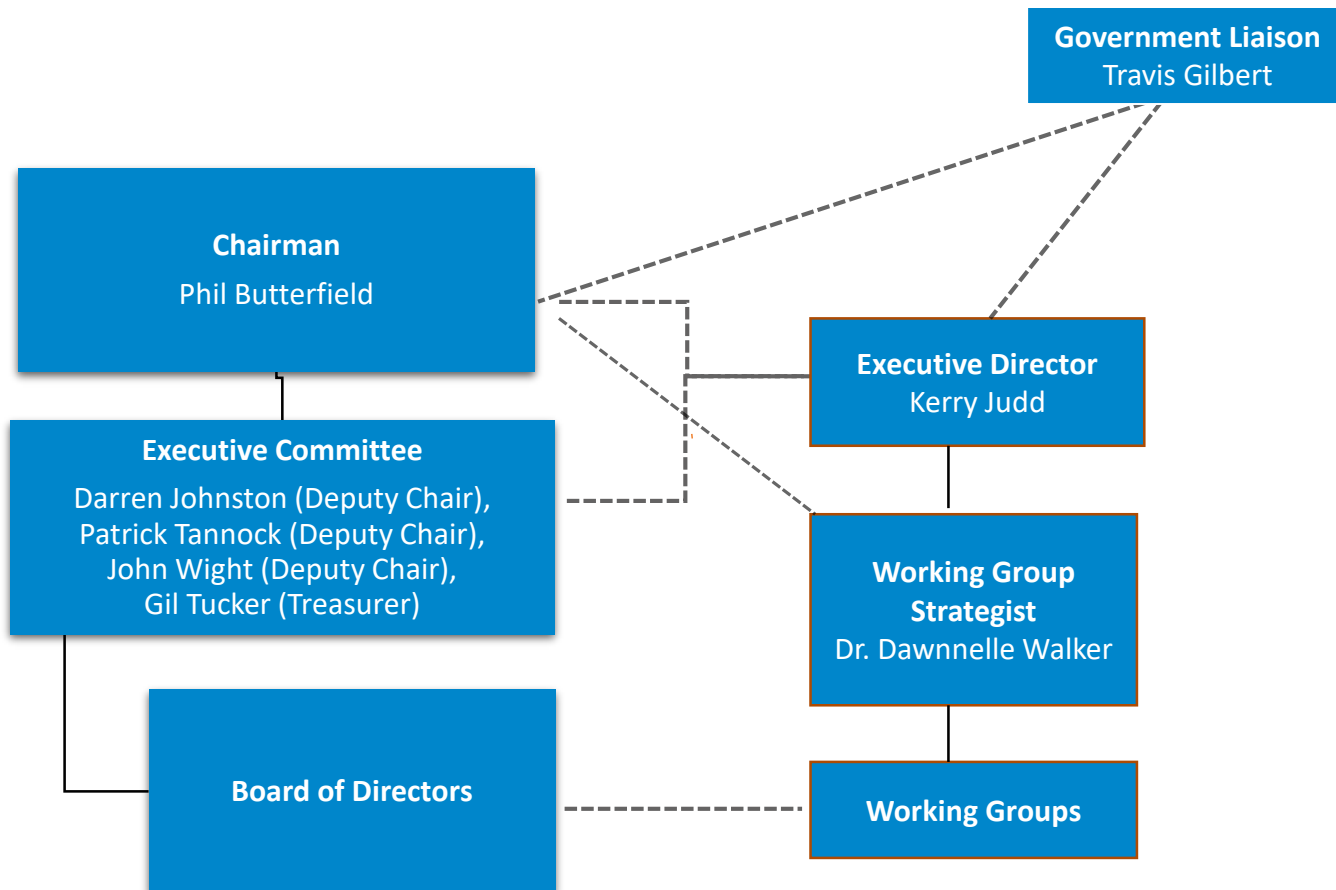
New Mandate

To develop a National Socio-Economic Plan for Bermuda including an Implementation Plan, which will prioritise key action initiatives supported by the Government.

- Single Chairman with no political affiliations
- Supported by a new Board of Directors comprised of 22 community and business leaders



OPERATING STRUCTURE



OPERATING STRUCTURE



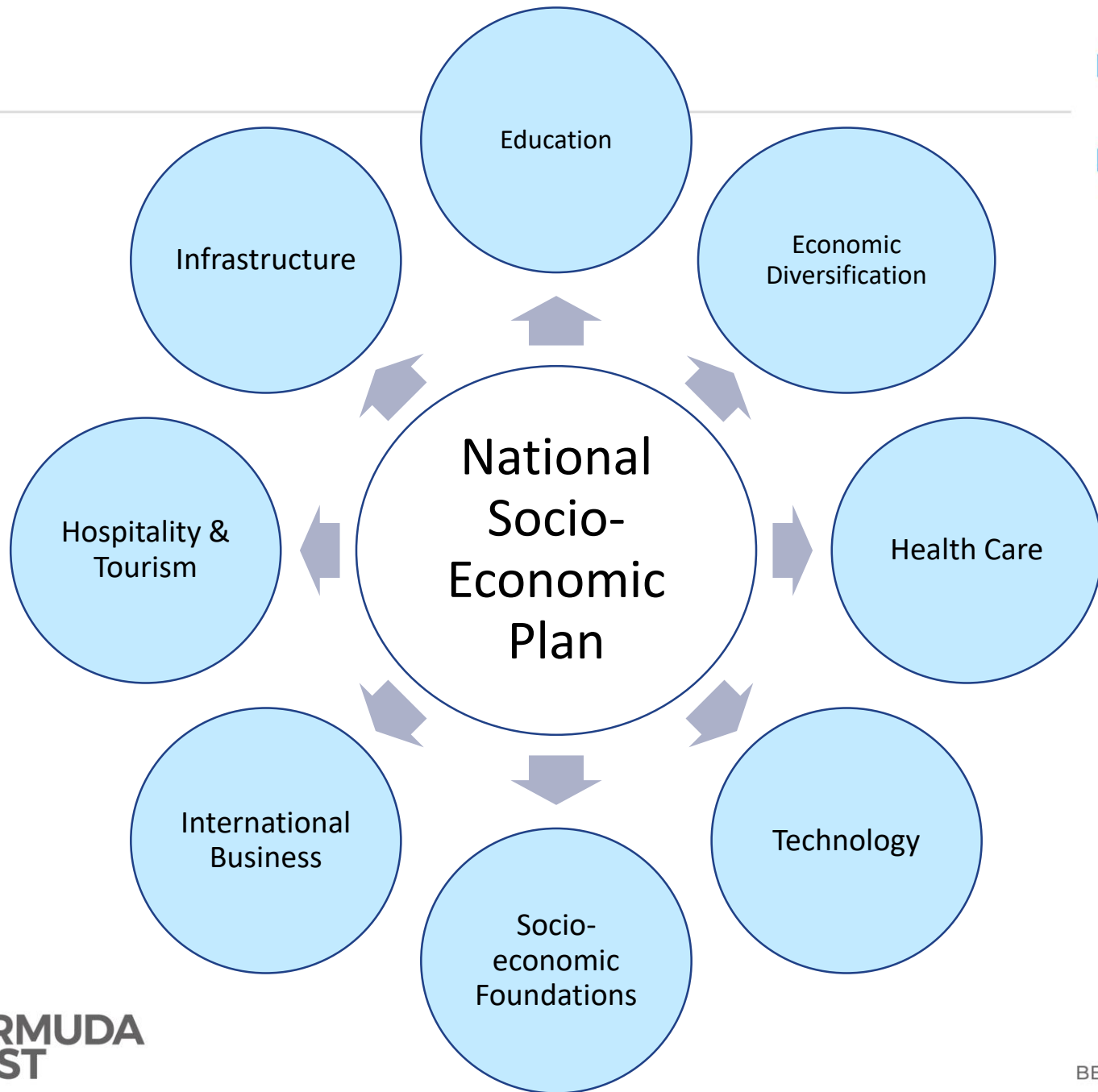
- **Chairman** – overall vision, with concurrence of Executive Committee and Board
- **Executive Committee**
 - Overall strategy, direction and oversight of BermudaFirst and Executive Director
 - Decision-making body
- **Executive Director**
 - Reports to Chairman & Executive Committee
 - Provides strategic, communications and administrative support to overall organisation and select working groups
 - Oversees external consultants
- **Working Group Strategist**
 - Reports to Chairman & Executive Director
 - Provides strategic and administrative support to select working groups and the Executive Director
- **Working Groups**
 - Topic-specific committees co-chaired by Board members and formed to support development of the National Socio-Economic Plan
 - To date, has included 90+ participants from the local community and business sectors, nominated by Board Members and approved by Executive Committees
- **Government Liaison**



BOARD MEMBERS

- Phil Butterfield – Chairman
- Andy Burrows
- Chris Furbert
- Chris Maiato
- Colm Homan
- Coral Lindo
- Darren Johnston – Deputy Chair
- Dr. Duranda Greene
- Gil Tucker – Treasurer
- Gita Blakeney Saltus
- John Johnston
- John Wight – Deputy Chair
- Lori Gilbert
- Michael Branco
- Michael Collins
- Michael Morrison
- Michelle Jackson
- Patrick Tannock – Deputy Chair
- Rod Attride-Stirling
- Scott Pearman
- Tammy Richardson
- Wendy McLeod







OUR PLANNING PROCESS



**BERMUDA
FIRST**

OUR PLANNING PROCESS



WORKING GROUPS

- Approximately 90 people comprise 8 sector specific working groups.
- Economic Diversification, Education, Health Care, Hospitality & Tourism, Infrastructure, International Business, Socio-Economic Foundations and Technology

CURRENT STATE – Phase 1 (*Complete*)

- Reviewed existing reports, plans and strategies
- Engaged diverse group of stakeholders to assess current initiatives
- Current State Summary Report for each sector completed and provided to the Premier.

FUTURE STATE – Phase 2 (*Complete*)

- Developed sector specific future state recommendations
- Assessed and prioritised recommendations at Working Group level and submitted to Executive Committee
- Executive Committee undertook an assessment and prioritisation exercise on ALL submitted recommendations
- Prioritised recommendations provided to the Premier for feedback on July 17, 2019

ROAD-MAPPING – Phase 3 (*to be started*)

- Construct Implementation Plan for those recommendations endorsed by the Premier
- Timing TBD





**BERMUDA
FIRST**